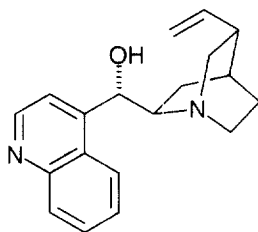


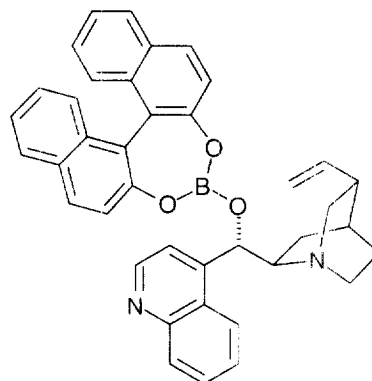
PII: S0957-4166(97)00533-8

Zixing Sian, Fuyong Cheng, Shiwen Huang, Dejie Zhao and Zhizhong Jing, An improved approach to (*R*)-(+)-1,1'-bi-2-naphthol of 100% enantiomeric excess via a cyclic borate ester, *Tetrahedron: Asymmetry*, **1997**, 8, 1175–1177, PII: S0957-4166(97)00107-9.

The correct structures for **3** and **4** are:

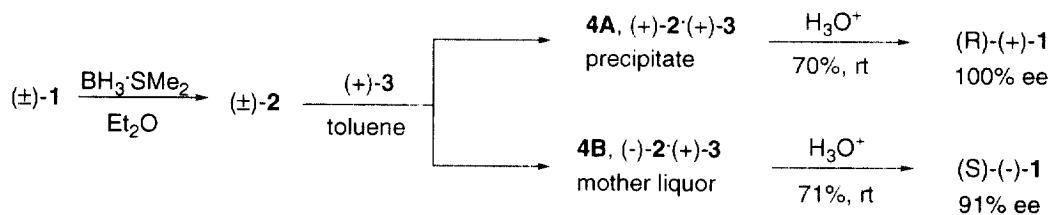


3 Cinchonine



4 1,1'-Bi-2-naphtholborane cinchonine derivative

The correct Scheme 1 is:



Scheme 1.